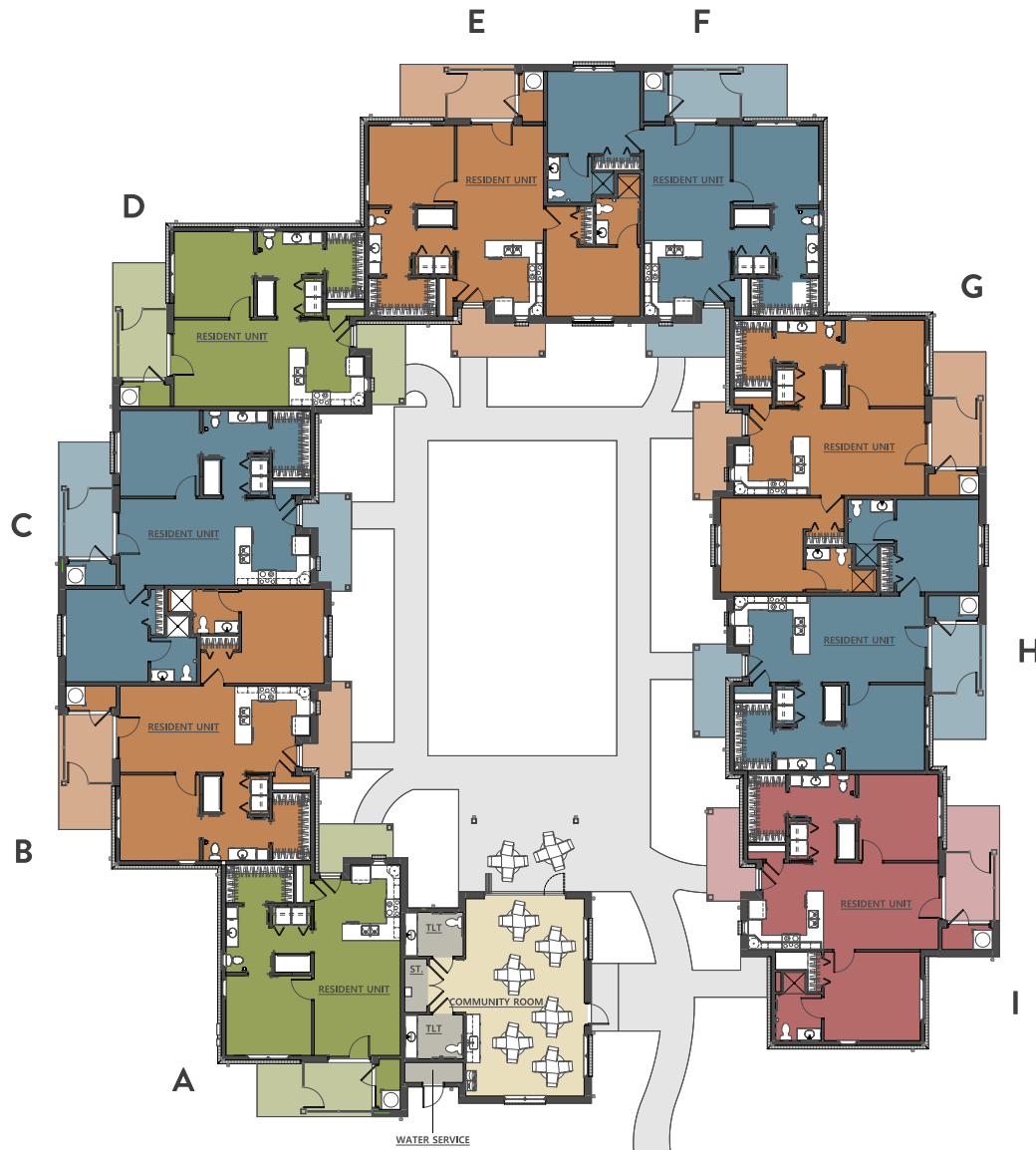


THE COURTYARDS AT LOWMAN

OVERALL PLAN



JUNIPER & MIMOSA POCKET HOMES

- CARDINAL** 1,011 SF
TWO BEDROOM, TWO BATH
- BLUEBIRD** 990 SF
TWO BEDROOM, TWO BATH
- DOVE** 1,018 SF
TWO BEDROOM, TWO BATH
- WREN** 740 SF
ONE BEDROOM, ONE BATH

